





**Power Line Corridor Montage showing trees for clearing.**

Pole #	Photo
Pole 3 (7318, 7320) Looking south	 <p data-bbox="316 1016 986 1048">Golf Course looking South across Hester Road to Pole 3.</p>
	 <p data-bbox="316 1890 995 1921">Golf Course looking South, across Hester Road to Pole 3.</p>



Pole #	Photo
	 <p data-bbox="316 943 1517 1010">Pole 3 (Hester Road) looking North to Pole 4, across greens 15 and 10. Dam on right (7321, 7322). Trees to be cleared</p>
	 <p data-bbox="316 1816 1528 1850">Pole 3 Looking North to Pole 4, greens 15 and 10, trees in foreground to be cleared.</p>

Pole #	Photo
	 <p data-bbox="316 943 1508 974">Pole 3 Looking North to Pole 4, from green 15, left of dam (7324, 7325). Trees to be cleared.</p>
	 <p data-bbox="316 1778 1508 1839">Pole 3 Looking North to Pole 4, from green 15, left of dam (7324, 7325). Trees in foreground to be cleared</p>

Pole #	Photo
	 <p data-bbox="316 936 1332 965">Pole 3 Looking North to Pole 4, from green 15, left of dam (7326). Tres to be cleared.</p>
	 <p data-bbox="316 1762 1358 1823">Looking towards Pole 4 marker, circled, from Fairway 10 showing 20m markers (7327). Trees marked for clearing in red.</p>

Pole #	Photo
	 <p data-bbox="316 945 1257 981">Pole 4 marker looking towards Pole 5 (7328). Trees marked for clearing in red.</p>  <p data-bbox="1072 1061 1513 1173">Pole 4 looking towards Pole 5, trees to be cleared (7329).</p>

Pole #	Photo
	 <p data-bbox="316 952 1524 985">Pole 4 looking towards Pole 5 (7330). Trees marked for clearing in red. Pole 5 marker circled.</p>
	 <p data-bbox="316 1780 1524 1814">Looking towards Pole 5 (7333). Trees marked for clearing in red.</p>



Pole #	Photo
	 <p data-bbox="316 965 1549 1025">Looking towards Pole 5 (7334). Trees marked for clearing in red. Pole 5 marker circled, centre-left.</p>
	 <p data-bbox="316 1843 1549 1910">Looking towards Pole 5 (7335). Trees marked for clearing in red.</p>

Pole #	Photo
	
	<p data-bbox="316 965 1091 994">Looking towards Pole 5 North East (7338). Trees on right to stay.</p>
	
	<p data-bbox="316 1816 1198 1845">Looking south from Pole 5 to Pole 4 (rear view) (7336). Trees for clearing.</p>



Pole #	Photo
	 <p data-bbox="316 972 1549 1010">Looking towards Pole 5 (7339). Trees on left for clearing. Pole 5 marker circled, centre-left</p>
<p data-bbox="86 1046 284 1137">Pole 7 to Pole 8 Native Forest Block</p>	 <p data-bbox="316 1856 1549 1890">Pole 7 to Pole 8 NNW. Note Pole 8 marker, lower centre (circled). (7346). Trees in centre for clearing.</p>

Pole #	Photo
	
	<p data-bbox="316 974 1236 1008">Pole 8 marker looking back to Pole 7 SSE. (7345). Trees in centre for clearing.</p>  <p data-bbox="316 1825 965 1859">Pole 8 (7348). Note Pole 8 marker centre-right. (7348)</p>

Pole #	Photo
	 <p data-bbox="316 976 1560 1043">Pole 8 (7350). Trees in red to be cleared. It is possible some of these trees may survive, but they have been severely burnt with no leaf canopies remaining.</p>
Pole 8 to Pole 9	 <p data-bbox="316 1899 1560 1933">Pole 8 to Pole 7, edge of Forest Block to Pine Plantation. (7347). Pine plantation trees totally burnt.</p>

415600

415700

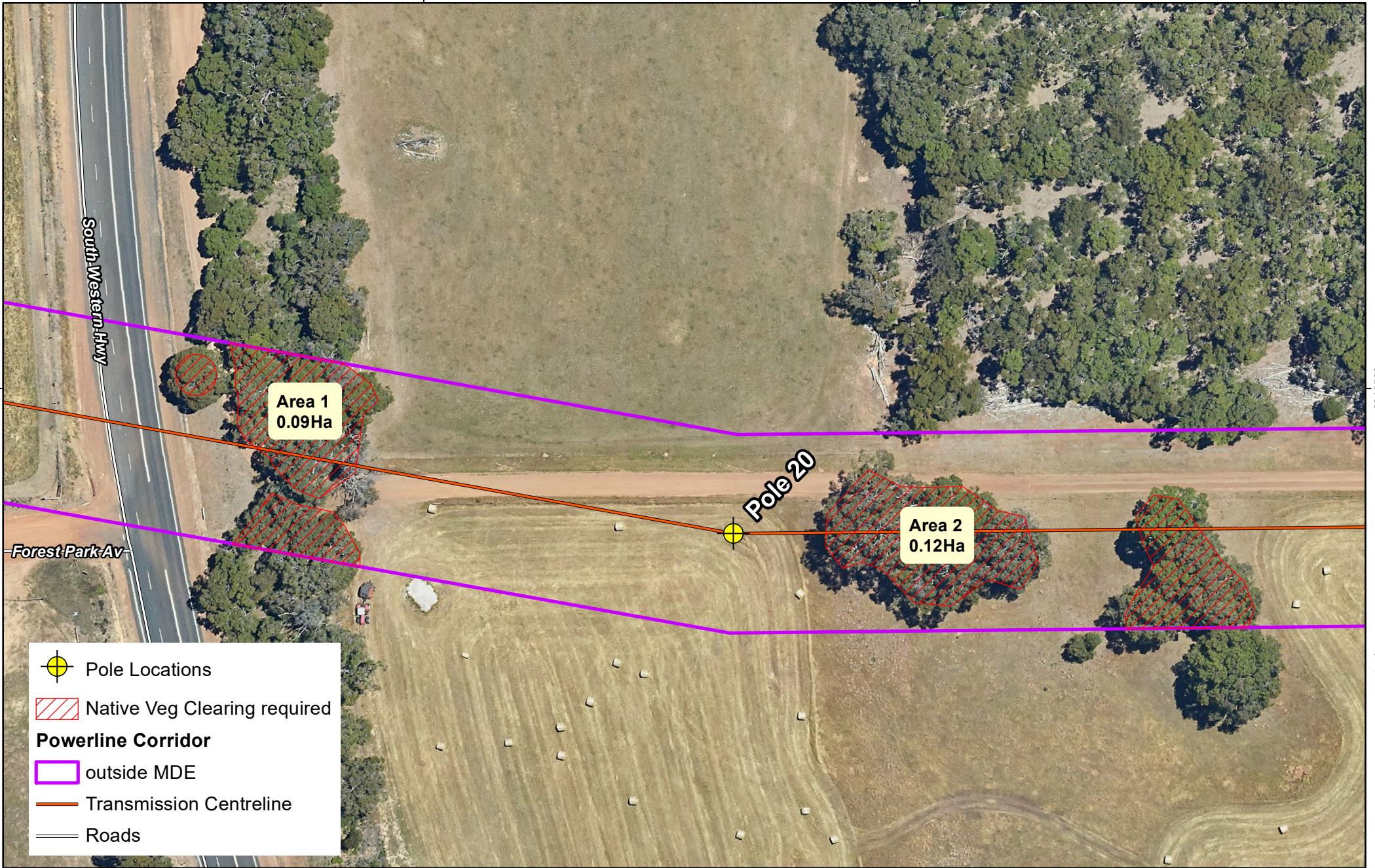
6249500






6249500

415600

415700

Internal Ref: 0039\_00\_2022



-  Pole Locations
-  Native Veg Clearing required
- Powerline Corridor**
-  outside MDE
-  Transmission Centreline
-  Roads

AREAS REQUIRING NATIVE VEGETATION CLEARING FROM POWERLINE DEVELOPMENT

MAP 1 - AREA UNAFFECTED BY BUSHFIRE

SCALE 1:1,000 @ A3



Datum: GDA94

Projection: MGA Zone 50



417500

417600

417700

6248700





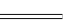
6248700

6248600

6248600 Internal Ref: 0039\_00\_2022



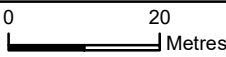
Area 3  
0.02Ha

-  Pole Locations
-  Native Veg Clearing required
- Powerline Corridor**
-  outside MDE
-  Transmission Centreline
-  Roads

AREAS REQUIRING NATIVE VEGETATION CLEARING FROM POWERLINE DEVELOPMENT

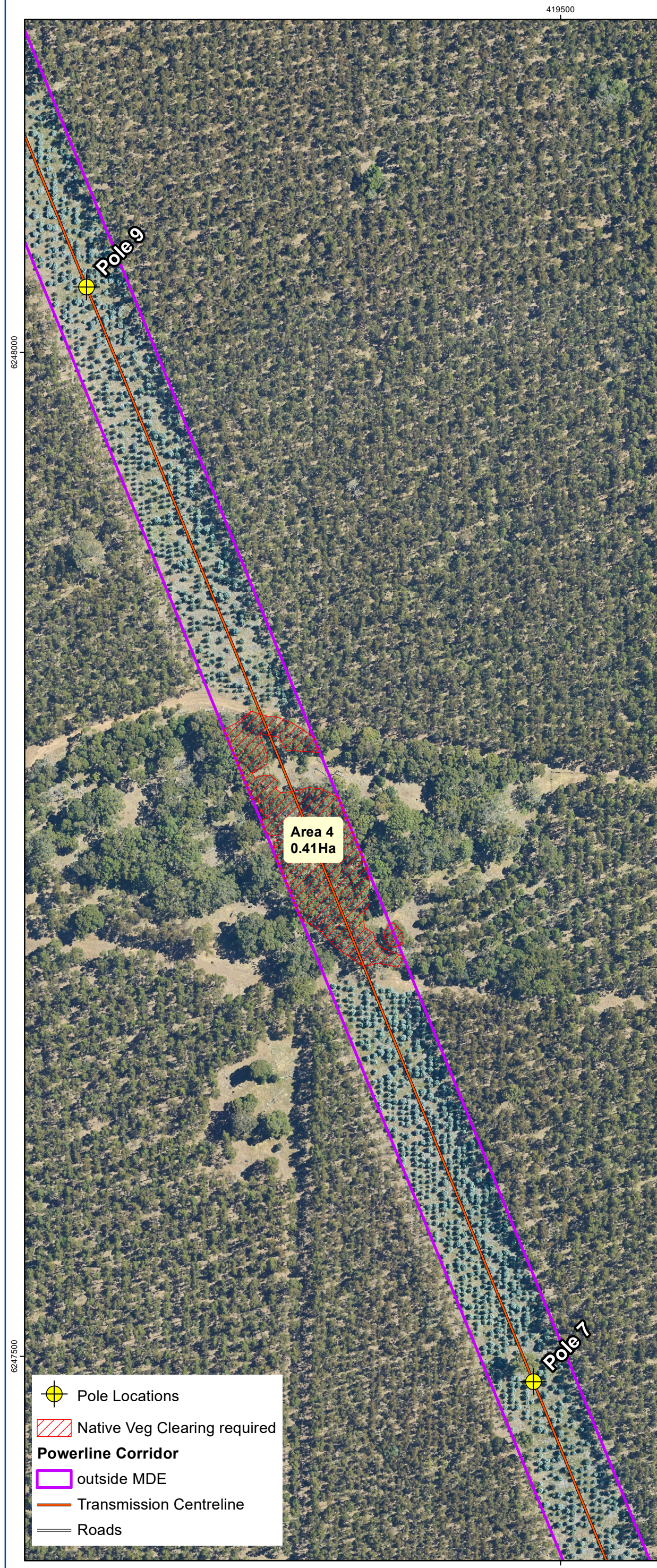
MAP 2 - AREA AFFECTED BY BUSHFIRE

SCALE 1:1,000 @ A3



Datum: GDA94  
Projection: MGA Zone 50





Pole 8 marker in foreground looking back to Pole 7



Pole 7 to Pole 8 looking NNW.  
Note Pole 8 marker in centre midground



Pole 8 to Pole 7, edge of forest block to Pine Plantation

419500



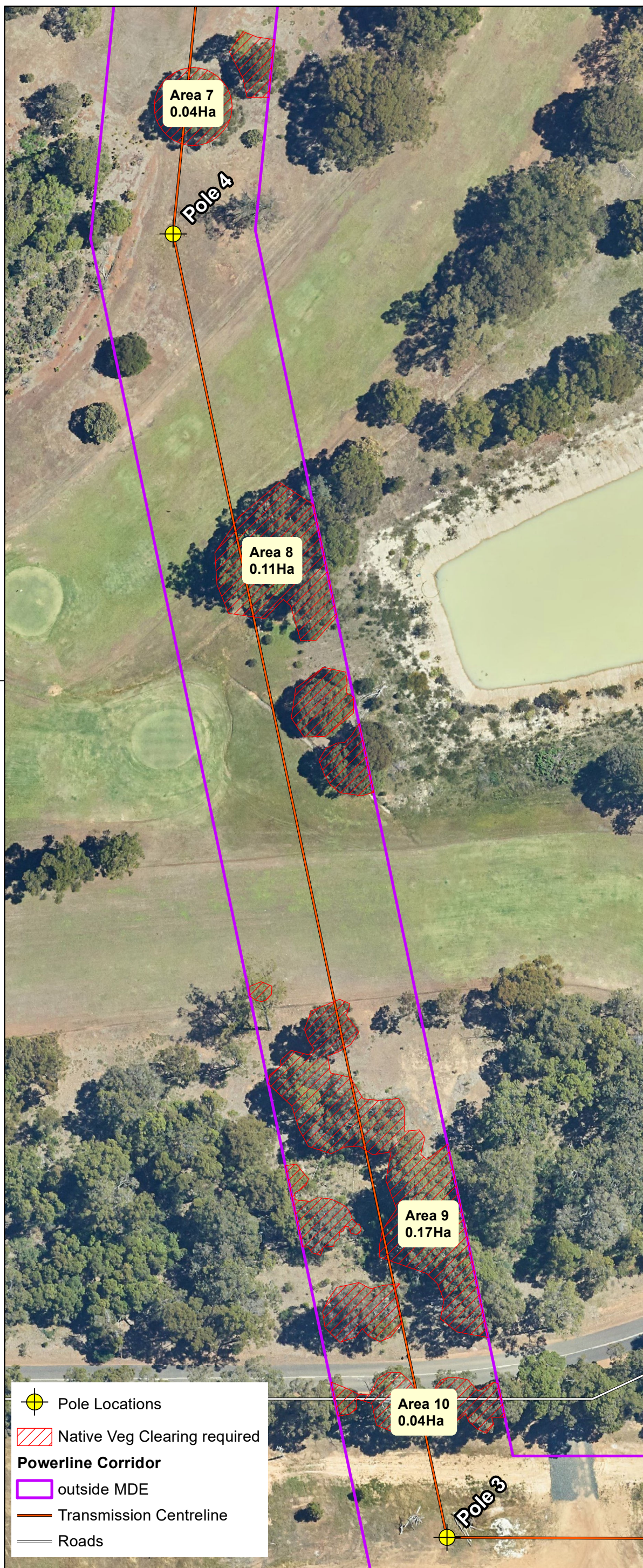
From Golf Course looking towards cleared farmland in background



From Golf Course looking towards Pole 5 location, cleared farmland in background



Looking south from Pole 5 location towards Pole 4 location



Looking back south from Golf Course to Pole 3



Looking Towards Pole 4 location from Hester Rd



Looking towards Pole 4, from Green 15, left of dam

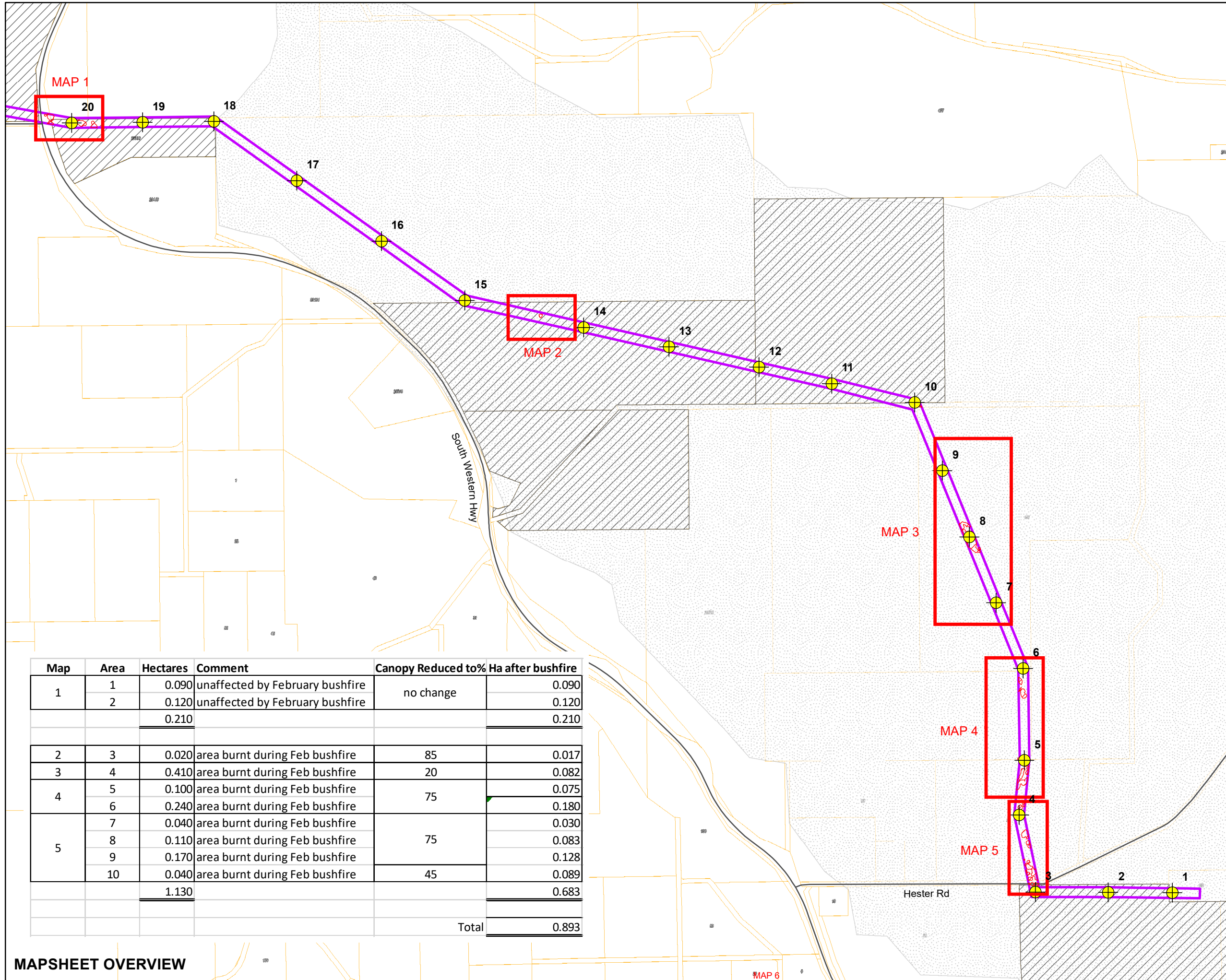


Looking towards Pole 4, from Green 15, left of dam



# Greenbushes Operations

Powerline Corridor  
Native Vegetation Clearing



- Pole Locations
- Native Veg Clearing required
- Road Network
- Powerline Corridor**
  - inside MDE
  - outside MDE
  - Talison Owned Property
  - Firescar Feb 2022
- Cadastre Address (LGATE-002) - Large Scale

Map	Area	Hectares	Comment	Canopy Reduced to%	Ha after bushfire
1	1	0.090	unaffected by February bushfire	no change	0.090
	2	0.120	unaffected by February bushfire		0.120
		0.210			0.210
2	3	0.020	area burnt during Feb bushfire	85	0.017
3	4	0.410	area burnt during Feb bushfire	20	0.082
4	5	0.100	area burnt during Feb bushfire	75	0.075
	6	0.240	area burnt during Feb bushfire		0.180
5	7	0.040	area burnt during Feb bushfire	75	0.030
	8	0.110	area burnt during Feb bushfire		0.083
	9	0.170	area burnt during Feb bushfire		0.128
	10	0.040	area burnt during Feb bushfire		0.089
		1.130			0.683
			<b>Total</b>		<b>0.893</b>

MAPSHEET OVERVIEW



0 250  
Meters

SCALE 1:15,000

Datum: GDA94  
Projection: MGA Zone 50

Date: 21/02/2022  
Sheet Size: A3  
Internal Ref: 0031\_04\_2022  
Drawn by: DB  
Requested by: RG

